

Performance Recording Beltex Sheep

Genetics are the only part of an animal's performance it can pass on to its lambs. The most accurate measure of genetic merit is an Estimated Breeding Value (EBV)



Source: J Scott and Partners, Fearn



Performance Recording Your Beltex Flock

Performance recording is vitally important for all breeders wishing to identify the animals best suited to their customers' ewe type, farm type and market.

By keeping records of growth rate and carcase quality breeders and buyers can identify those rams that will deliver greatest returns.

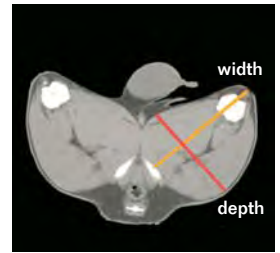
The difference between a ram of high genetic merit and one of low genetic merit can be as much as £3/lamb and they can't always be identified 'by eye' alone.

Recording Beltex Sheep

The Beltex recording scheme started in 2008. Records from over 500 ewes in 12 flocks have been analysed using the latest computed tomography (CT) technology to produce a range of Estimated Breeding Values (EBVs) for traits of commercial importance:



CT scan image using 'spiral' technique. Image source: SAC



CT cross section through the gigot. Image source: SAC

EBV	An indicator of genetic merit for...
8 Week Weight (kg)	Growth rate in the lambs to 8 weeks of age
Scan Weight (kg)	Growth rate in the lambs to 21 weeks of age
Muscle Depth (mm)	Carcase muscling
Backfat Depth (mm)	Leanness in the carcase
Mature Size (kg)	Ewe efficiency
Carcase Lean Weight (from CT*)	Total muscle yield in the carcase
Carcase Fat Weight (from CT*)	Total fat yield in the carcase
Hind Leg Muscularity (from CT*)	Gigot shape
Litter Size	Prolificacy. In males it indicates how prolific a ram's daughters will be.
Maternal Ability (kg)	Maternal ability of the ewe (linked to milk production).

*CT Scanning is the most accurate method of measuring total muscle and fat yield in the live animal and is available to all breeders who choose to performance record.

Why not have your ram lambs measured?

Why Performance Record?



Source: N&J McQuistin, Airyolland

Performance recording:

- ✓ provides an independent assessment of the breeding potential of individual animals and families relative to the rest of the breed
- ✓ demonstrates to breeders (and buyers) that the flock is making genetic progress. This can be a valuable aid for breeding decisions in the flock and in developing repeat sales with customers
- ✓ adds value to ram sales
 - at the mart, where there is an increasing commercial demand for EBVs
 - when selling from home and/or online, where EBVs can support the breeding claims and pricing structure of homebred rams

Performance records help breeders and buyers make informed breeding decisions and avoid the risk associated with selecting rams of unknown breeding potential.

Performance Recording Beltex Sheep

Performance recording provides the most accurate way to identify elite breeding stock and enhance the breed. The following breeders are currently performance recording their flocks:

Name	Flock	County	Telephone
Messrs N & J McQuistin	Airyolland	Dumfriesshire	01581 600223
Mr G N Pamplin	Ashfield	Northants	01933 461691
Messrs R & M Paterson	Auchenlay	Perthshire	01786 823129
Mr D Douglas	Beechcross	Highland	01463 731839
Mr M Walker	Burroway	Oxfordshire	01993 771517
Messrs A & M Dunlop	Corstane and Broughton	Lanarkshire	01899 830203
James Scott & Partners	Fearn	Highland	01862 832205
Mr C M Jennings	Hallcraze	Cumbria	01539 823215
Messrs A. Goodge & F. Sommerville	Hillbrae	Aberdeenshire	0870 050 3456
Mr A Maclean	Northcop	Highland	01456 476797
Mr R Flaws	Woodwick	Orkney	01856 751364

To get involved in recording your flock in the national Beltex breeding scheme contact Signet. Tel: **01908 844195** or email signet@ahdbms.org.uk

